

PLASTEC VENTILATION SOLUTION

A NEW WIND FOR A SAFE AND HEALTHY VENTILATION SYSTEM



**Técnicas y
Controles
Industriales S.A.S.**

Anti-corrosion solutions for commercial,
industrial, and laboratory facilities.

www.tecnicasycontroles.com

ANTI-CORROSION FANS & BLOWERS

FOR FUMES, CORROSIVE GASES, & TOXIC EXTRACTION ENVIRONMENTS

PLASTECH Ventilation is more than just a name.

We are the global leaders and innovators of anti-corrosion resistant fans and blowers, and an excellent choice for the efficient conveyance of corrosive, chemically laden, humid, polluted, gas, fumes, and air environments. From small local installations to large multinational companies, we respond to our clients challenges.

The success of our company is based on the daily implementation of our actions and decisions of four fundamental values:

Support

To support all our customers needs and requests with our team of professional engineers.

Reactivity

To create and maintain a personal relationship with each of our customers, to excel in our quality of services, and to respond immediately to our clients requests.

Competitiveness

To optimize and accelerate our processes by reducing costs without ever losing sight of our customer's quality requirements.

Innovation

To continuously improve our products and develop new innovative solutions to better serve the needs of our customers.



LEADERS & INNOVATORS
of anti-corrosion
fans & blowers



SERVING OVER 100 COUNTRIES
present on all continents



55+ YEARS IN BUSINESS
with decades of
professional experience



PLANT IN FLORIDA
Quick Delivery
1-2 business days
for most products



+ 1.000 CLIENTS
trust us



SOLUTION FOR INDUSTRIES

Wide variety of anti-corrosive fans, perfectly suited for the extraction of corrosive acids, toxic fumes, gases, and other hazardous vapors.



SOLUTION FOR LABORATORIES

Complete air extraction control systems and regulatory solutions for laboratory fume hoods and cupboards to ensure use life safety requirements.



SOLUTION FOR WASTE / WATER TREATMENT INDUSTRY

Full line of blowers specifically designed for harsh toxic lift station fumes and water aeration treatments.

MARKETS



OIL, PETROLEUM and GAS INDUSTRIES

Oil Refinery and Extraction Systems, Exploration/Upstream/Midstream Facilities, Natural Gas Compressor Stations, LNG re-gasification plants, Treatment Systems, Water Process Treatments, Drying and Dehydration, Exhaust System for Offshore Platforms.



WATER TREATMENT, WASTEWATER, INDUSTRIAL SCRUBBER INDUSTRY

Water Treatment Facilities, Reclamation Facilities, Wastewater Treatment Processing, Fume/Water Scrubber Systems, Aeration Applications, Sludge Processing and Drying of By-products, Pickling, Sewer and Water Tunnels, Wastewater Lift Pump Stations.



PHARMACEUTICAL AND CHEMICAL INDUSTRIES

Medical Facilities, Research and Testing and Manufacturing Processes, Fluidized Systems.



MARITIME INDUSTRIES

Cruise Ship Industry, Container Ships, Engine Room Ventilation Systems, Fuel Lockers Ventilation, Bilge Ventilation, Moisture Laden Applications.



AGRICULTURAL INDUSTRY, SURFACE treatment and AGRI-FOOD industry

Fertilization Ventilation, Chemical/Insecticide Exhaust, Livestock and Poultry Exhaust Systems (AFO & CAFO), Equestrian Facilities, Dust/Humidity/Grease Control, Grain Drying, Material Handling.



CHEMICAL STORAGE

Hazardous Material Storage Buildings, Chemical Mixing and Dispensing Storage Buildings, Chemical Containment Rooms, Paint Storage Rooms, Spray Booth Exhaust, Reagent Chemical Tanks, Chemical Cabinets, Portable Equipment/Storage Shelters.



NATATORIUMS, WATER PARKS, MUNICIPAL AQUATIC FACILITIES

Chemical/Chlorine Storage Rooms, Surge Tank Systems, Enclosed Tube Water Slide Ventilation, Underground Equipment/Chemical Vaults, Fitness Facilities.



ELECTRIC AUTOMOTIVE, BATTERY (EV & BESS) & STORAGE INDUSTRIES

Lithium-Ion Battery Storage Systems, Grid-scale Battery Storage, Battery Energy Storage Systems (BESS), Battery Enclosure Cabinets, Energy Storage Containers, Power Stations, Portable Energy Containments.



UNIVERSITIES/INSTITUTES/SCHOOLS

Science and Technology Laboratories, Biology/Physics/Chemistry Laboratories.



LABORATORY FUME HOOD

Science and Technology, Biotechnology, Pancreatic Research Centers, Medicine & Biomedical Sciences, (BSL-1 ~ 4), Cancer/Research, Beam Therapeutics, Toxicology, Forensic Science.



COSTAL HOTEL/RESORT INDUSTRY

Back of House Exhaust Systems, High Rise Exhaust and Ventilation Systems, Anti-Salt Air and Anti-Salt Water Blower Systems, Coastal Restroom Facilities.



CANNABIS AND HEMP INDUSTRY

Cannabis and Hemp Cultivation Facilities, Grow Rooms, Hydroponic Gardens, Greenhouses.

OTHER MARKETS SERVED

- Crematorium Industry
- Plating & Coating Industry
- Marine Laboratory & Aquarium Facilities
- Commercial Heating Ventilation and Air Conditioning (HVAC)
- Industrial Laundry Facilities
- Brewery & Distillery Industry
- Machinery and Welding Industry
- Pulp / Paper, Beverage, Plastic, & Glass Manufacturing Facilities
- Emission Control System Station Facilities

LABORATORY FUME HOOD INDIVIDUAL SYSTEM EXTRACTION

University of Jussieu - Paris,
France. Science & Technology
Laboratory

Center for Scientific Research
(Largest fundamental science
agency in Europe)

Thai Oil Public Company Limited
Thailand



We at **PLASTEC Ventilation** believe in
keeping it simple and safe.

With extensive experience and proven
field installations of individual system
extractions, **PLASTEC Ventilation**
offers a comprehensive line of superior
high-quality corrosion and hazardous
gas/fume resistant polypropylene
equipment and monitoring controls.

Individual system extraction reduces
installation time, the initial cost of
construction, exhaust equipment
systems, decreases long term operations,
and maintenance costs to owners.
Most importantly, our systems protect
the safety and well-being of the
end-users.

LABORATORY FUME HOOD AIR EXTRACTION CONTROLS

L. Solution is a unique and progressive
concept for your laboratory
management and security.

L.SOLUTION

INDIVIDUAL FUME HOOD EXTRACTION CONTROLLER



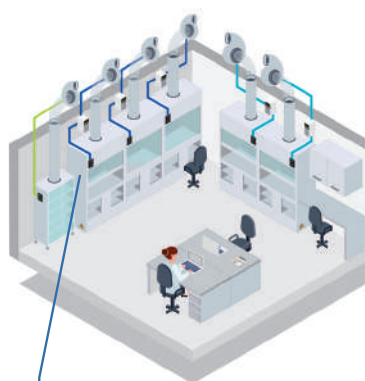
L.COM
CONTROL UP TO
3 FUME HOODS
AND/OR SNORKEL
ARM HOODS



E-CONTROL
CONTROL OF AIR
FLOW ON EACH
FUME HOOD



CAPTUR
CONTROL TOWER.
Up to 31 e-Control
and or L.Com units.



LABORATORY ROOM EXTRACTION CONTROLLER



FOR SPEED FUME
HOOD FIXED OR
VARIABLE AIR
SUPPLY

COMPLETE RANGE

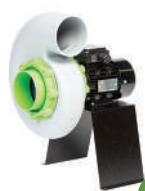
Find the right product for your project thanks to ZEPHYR, our online selection software tool!

www.plastecventilation.com
Click on **support**

ZEPHYR

PLASTEC SERIES

Polypropylene fan with no metal material in the air-stream. Manufactured following ISO 9001-2015 standards. Chemical and corrosion resistant Direct Drive centrifugal fans. Available with Carbon Impregnated Polypropylene (CIP) housing as well as XP motors.



ES

PLASTEC 15

Air flow rate:
11 to 600 CFM
P max:
0.1 to 2.55 in.w.g.



ES MP

PLASTEC 20

Air flow rate:
30 to 1200 CFM
P max:
0.15 to 5.8 in.w.g.



ES MP

PLASTEC 25

Air flow rate:
100 to 2100 CFM
P max:
0.25 to 8 in.w.g.



ES

PLASTEC 30

Air flow rate:
270 to 3400 CFM
P max:
0.3 to 3.1 in.w.g.



ES MP

PLASTEC 35

Air flow rate:
500 to 6400 CFM
P max:
0.4 to 5.45 in.w.g.



MP

PLASTEC 50

Air flow rate:
800 to 10800 CFM
P max:
0.3 to 12 in.w.g.

ES ECONOMY SAVINGS

MP MAXIMUM POWER

STORM SERIES

High static pressure fans for applications such as Storage Cabinets, Scrubber Tank Systems, Snorkel Fume Arms, Commercial Washers. All series designed with Hindered Amine Light Stabilizers (HALS) for increase UV resistance.



ES

STORM 10

Air flow rate:
10 to 150 CFM
P max:
0.05 to 2.4 in.w.g.



ES MP

STORM 12

Air flow rate:
20 to 400 CFM
P max:
0.07 to 4.86 in.w.g.



ES

STORM 14

Air flow rate:
35 to 800 CFM
P max:
0.1 to 8 in.w.g.



ES

STORM 16

Air flow rate:
50 to 1340 CFM
P max:
0.1 to 12 in.w.g.



MP

STORM 18

Air flow rate:
800 to 3000 CFM
P max:
8 to 18.5 in.w.g.

JET SERIES

Incorporates in-line and up-blast capability series. The integrated polypropylene weather hood conceals the motor from elements and is mounted outside of the corrosive airstream fumes.



ES

JET 20

Air flow rate:
150 to 1250 CFM
P max:
0.1 to 4.2 in.w.g.



ES MP

JET 25

Air flow rate:
200 to 2740 CFM
P max:
0.15 to 8.6 in.w.g.



ES MP

JET 30

Air flow rate:
500 to 2500 CFM
P max:
0.2 to 3 in.w.g.

EXPLOSION RESISTANT



All Series fans are available in XP versions. All fans are compliant with U.S. and international standards: AMCA, NEC 500/505, ATEC (EN60079) and European Directives (99/92/EC and 94/9/EC).

XP MOTORS MARKING

NEC 500: CLASS I DIV II GROUP A, BT4

NEC 505: CLASS I ZONE II AEx d GROUP IIC T4

ATEX: Ex II 36 Ex c GROUP IIC T4

AMCA: SPARK "A" COMPLIANT

HIGH QUALITY PRODUCTS

Constructed with UV-Treated polypropylene, PLASTEC Ventilation fans are ideally suited for corrosive or toxic work environments.



Anti-UV & recyclable

High Impact Resistant Polypropylene

High corrosion resistance

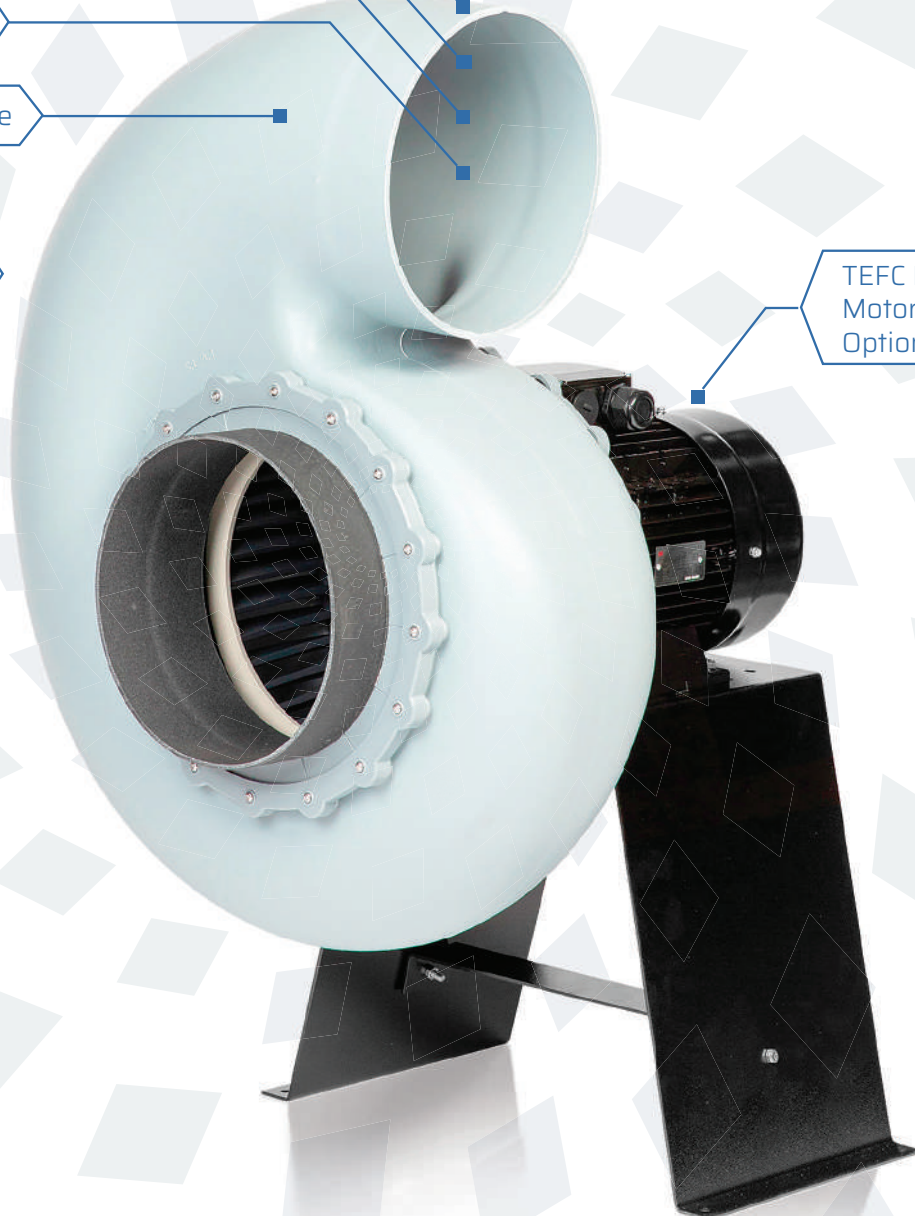
From 10 to 10,800 CFM

140°F (60°C) Temperature

Wide range of products

Easy to install

TEFC Direct Drive
Motors (XP Motors
Optional)



ACCESSORIES AND MOTORS

Complete list of accessories at www.plastecventilation.com



CHEMICAL RESISTANT STACK

Corrosion Resistant UV treated polypropylene seamless constructed blower fume exhaust stack. (Multi-Heights available)



DISCONNECT SWITCH

NEMA-4X, IP66 Rated, UL Listed, CE Approved disconnect controller switch. (Explosion resistant disconnect switch optional)



MOTORIZED DAMPER

Equipped with both proportional and On/Off control options.



POLYPROPYLENE WEATHER HOOD / PEDESTAL

Utility blower motor weather UV-Treated hood protection cover / pedestal.



ROOF UNIT KIT

Rigid polypropylene constructed roof unit kit, allows direct mounting to roof curb. Includes curb cap, brackets, exhaust guard, and motor protection housing.



MOTOR SUPPORT STAND IN PICKLED STEEL

Pickled Steel support stand with black enamel finish. (Stainless steel construction optional)



ADJUSTABLE BUTTERFLY DAMPERS

Corrosion resistant UV treated polypropylene constructed damper.



VARIABLE FREQUENCY DRIVES

NEMA 1 rated Variable Frequency Drives (VFDs) ranging from 1.5 horsepower to 10 horsepower.

ADDITIONAL AVAILABLE ACCESSORIES

Vibration Isolation Dampers
Rigid Transition Rings
Explosion Resistant Disconnect Switches
Roof Curbs
Gravity Back Draft Dampers
Exhaust Guards
Flexible PVC Reducers / Couplings
Stainless Steel Impellers
Aluminum Weather Hood / Pedestal
Stainless Steel Motor Support Stand
Wall Mounting Brackets
Multi-Height Weather Stacks

TESTIMONIALS

"Mote's experience with Plastec Ventilation products and people has been exceptional. Great product and they built just what we wanted, and it has exceeded our expectations."

Randy Gomes

Facility Director of Mote Marine Laboratory and Aquarium.

"The Plastec Ventilation fan that we purchased is economical, was delivered in a few days and has exceeded my expectations. It is quiet and out of sight and out of mind. I highly recommend Plastec Ventilation for any of your fume hood or corrosive gas exhaust applications."

Robert Scott

Project Engineer at Diversified CPC International Incorporated Inc.

SOME COMPLETED PROJECTS

Abu Dhabi Medical Industries - Abu Dhabi
U.A.E. | Medical Facility

Lifetime Fitness - USA | Natatorium &
Fitness

Crystal Finishing Systems - Schofield, WI |
Chemical Plating and Coating

CERMET / Flexilab - Mexico | Laboratory
Industry

EVOQUA / Siemens Water Technologies -
USA | Waste/Water Treatment Plant

Questron Technologies Corporation -
ON Canada | Laboratory Automation

Altapure - Southbend, IN | Pharmaceutical
and Biomedical Laboratory

**LivWell Enlightened Health Marijuana
Dispensary** - Denver, CO | Cannabis and
Hemp Industry

Pellerin Milnor Corporation - Kenner, LA |
Commercial Industrial Laundry Industry

Steris Corporation - QC Canada | Medical
Equipment Manufacturing Industry

Majestic Cruise Lines S.M.V. Freewinds -
Miami, FL | Maritime Cruise Ships

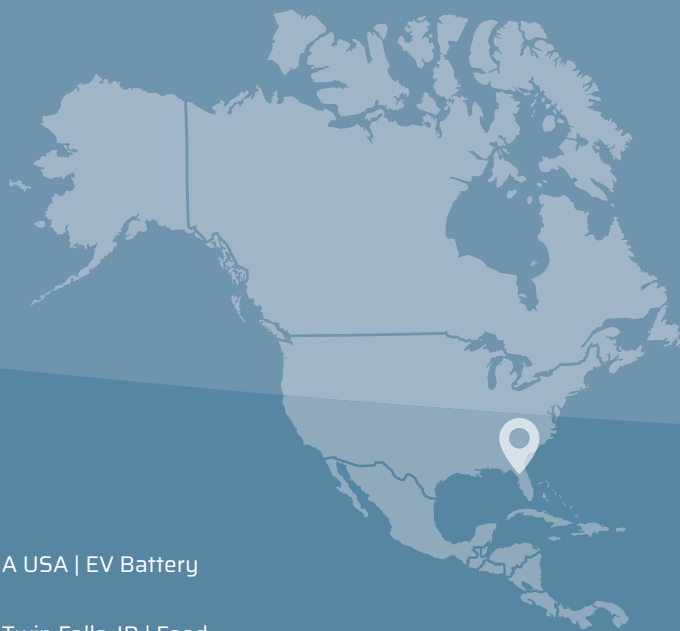
Nexen Group Inc - AB Canada |
Oil and Gas Industry

**National High Magnetic Field Laboratory
FSU** - Tallahassee, FL | University
Laboratory

Modern Packaging LLC - NY USA |
Machinery Manufacturing Industry

Rivian Automotive Plant - IL USA | EV
Battery Industry

20+ YEARS OF NORTH AMERICA PRESENCE



Scheugenpflug - GA USA | EV Battery
Industry

Chobani Yoghurt - Twin Falls, ID | Food
Industry

Fisher Scientific Company LLC - Suwanee,
GA | Laboratory Fume Hood Industry

John Matthey Catalysts - Sevierville, TN |
Pharmaceutical Industry

R&D Altanova - South Plainfield, NJ | Semi-
conductor Industry

US Digestive Health at Exton - Willow
Grove, PA | Medical (Gastroenterology)

Fluid-Quip Incorporated - Springfield, OH |
Agricultural & Pulp Paper Manufacturing

Vanaire - Louisville, KY | Water & Air
Scrubber Industry

Greenfield Energy Centre - ON Canada |
Natural Gas Fired Power Plant Industry



Plastec Ventilation, Inc.
2012 58th Avenue Cir. E.
Bradenton, FL 34203

Colombia Distributor
Técnicas y Controles Industriales S.A.S.
www.tecnicasycontroles.com



**Técnicas y
Controles
Industriales S.A.S.**



Member of AMCA



www.plastecventilation.com